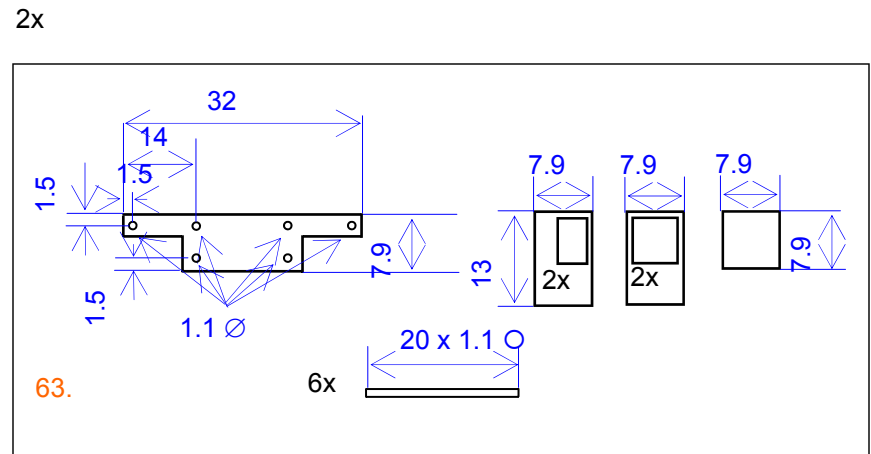
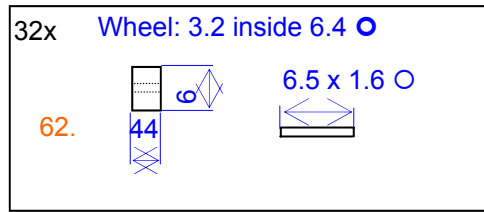
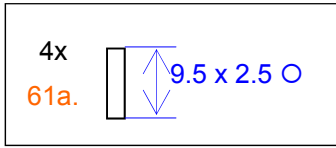
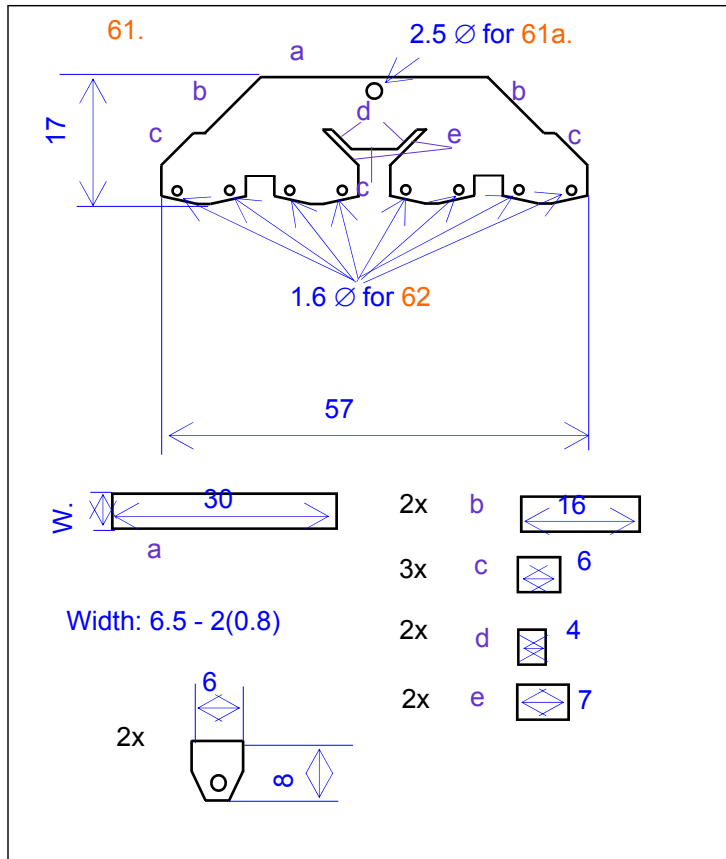
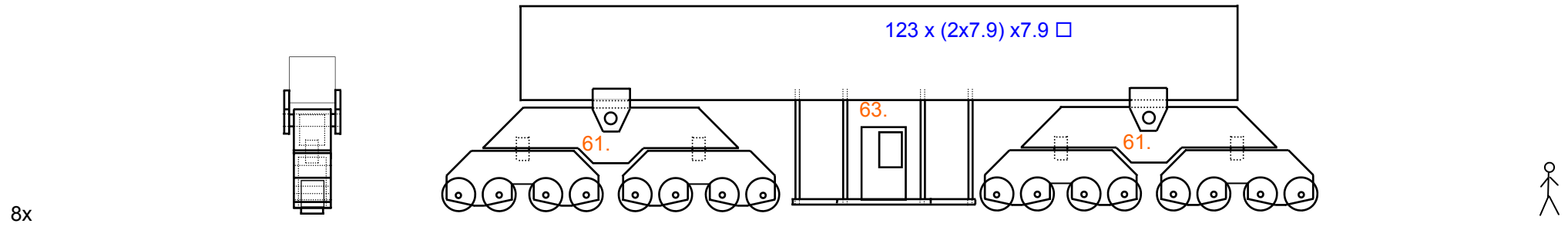
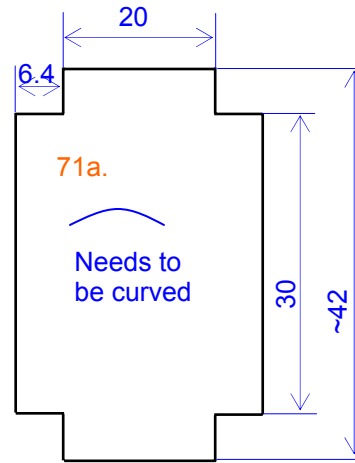
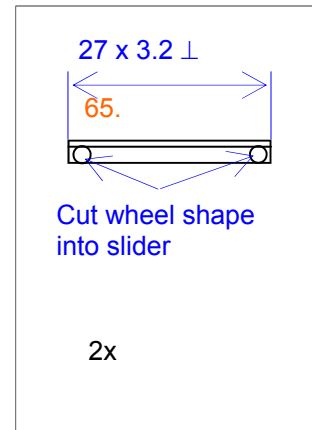
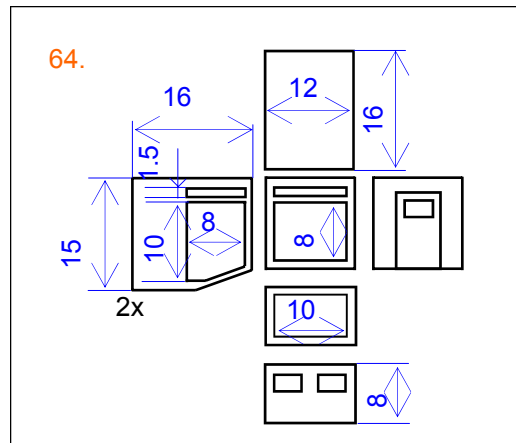
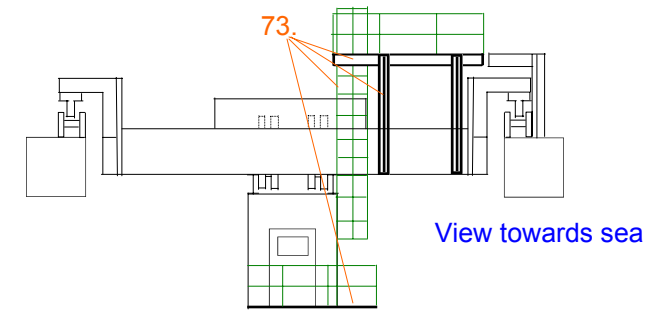
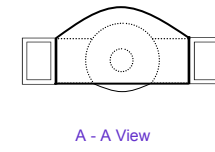
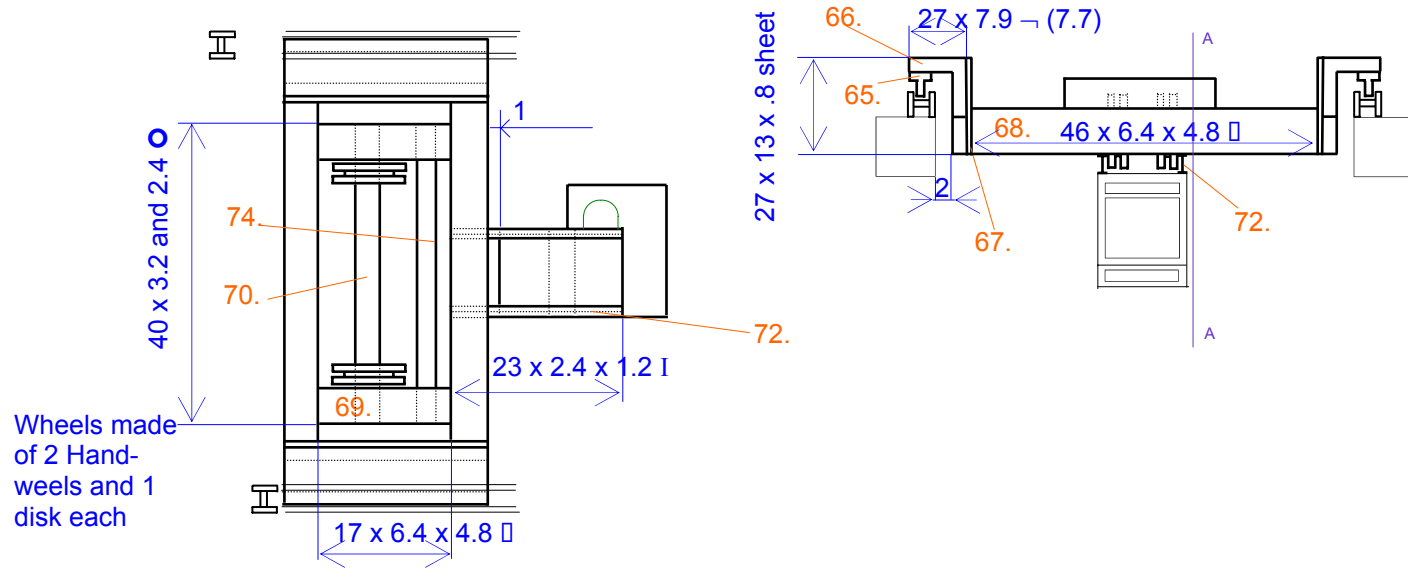


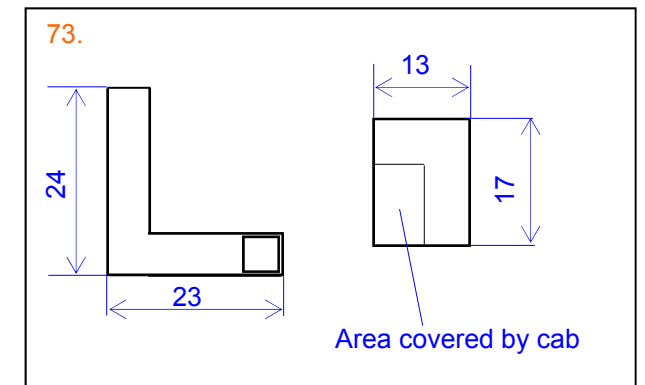
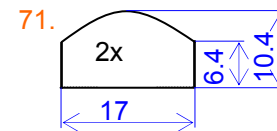
Kalmar Crane, Trucks, Seaside view



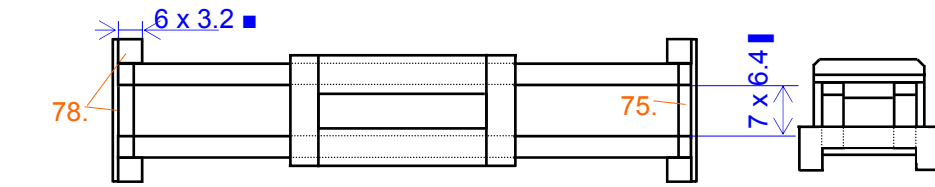
# Kalmar Crane, Trolley



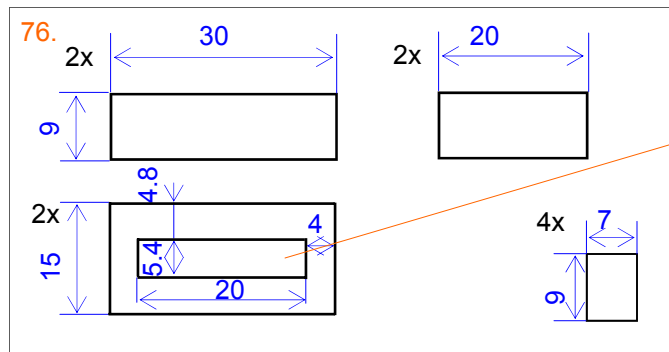
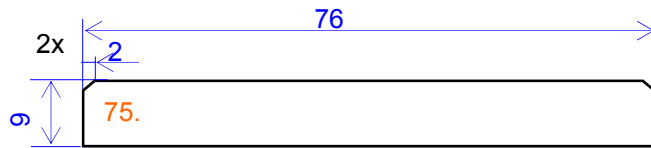
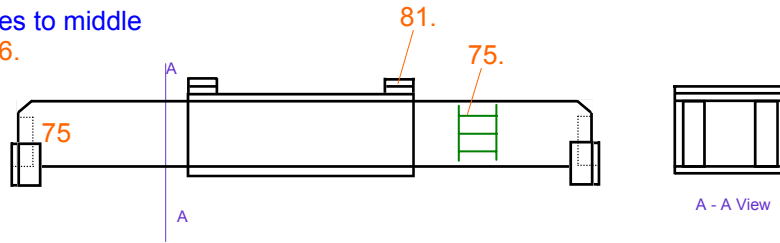
Length 42mm:  
40 to cover the entire length plus 2 x .8 because of thickness of 71.



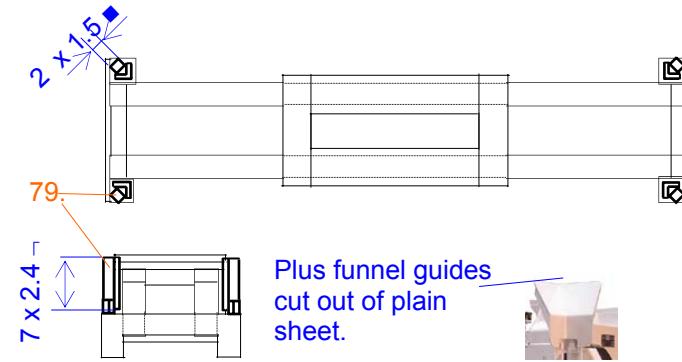
Kalmar Crane, Spreader



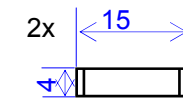
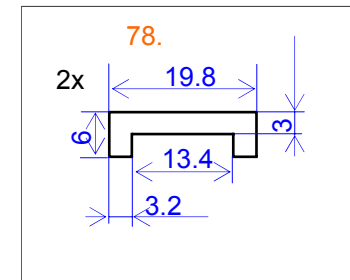
Adjust 75. and 78. pieces to middle piece 76.



Box for electrical piece fit into the 20 x 5.4 opening.

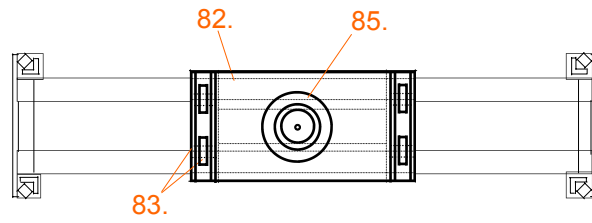


Plus funnel guides cut out of plain sheet.



Cut 45 degree angle on both ends

Kalmar Crane, Lifter



Wheels made of 2 Handweels and 1 disk each. Disk needs to be cut down.

